

Finding our way in a changing world

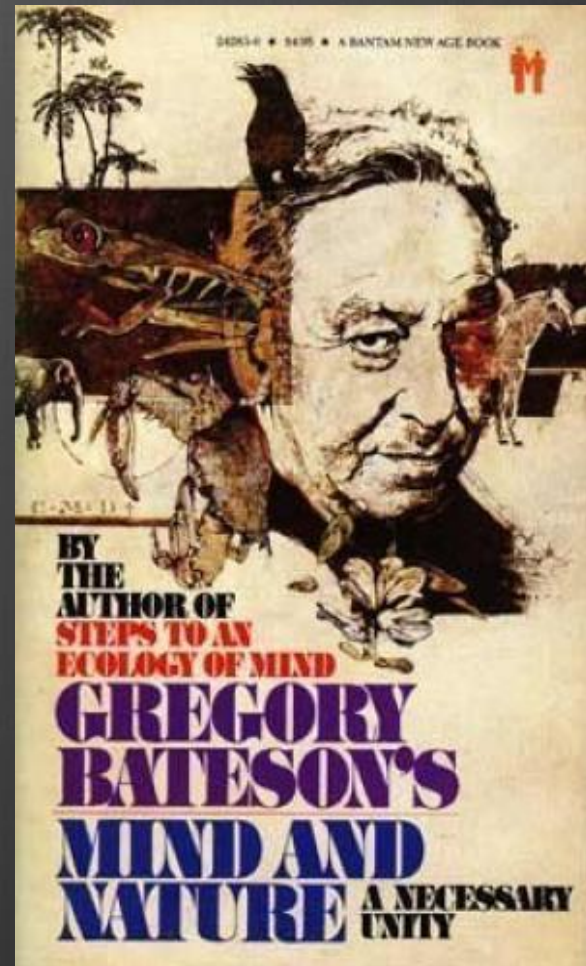
Humility, Integrity & Ambiguity

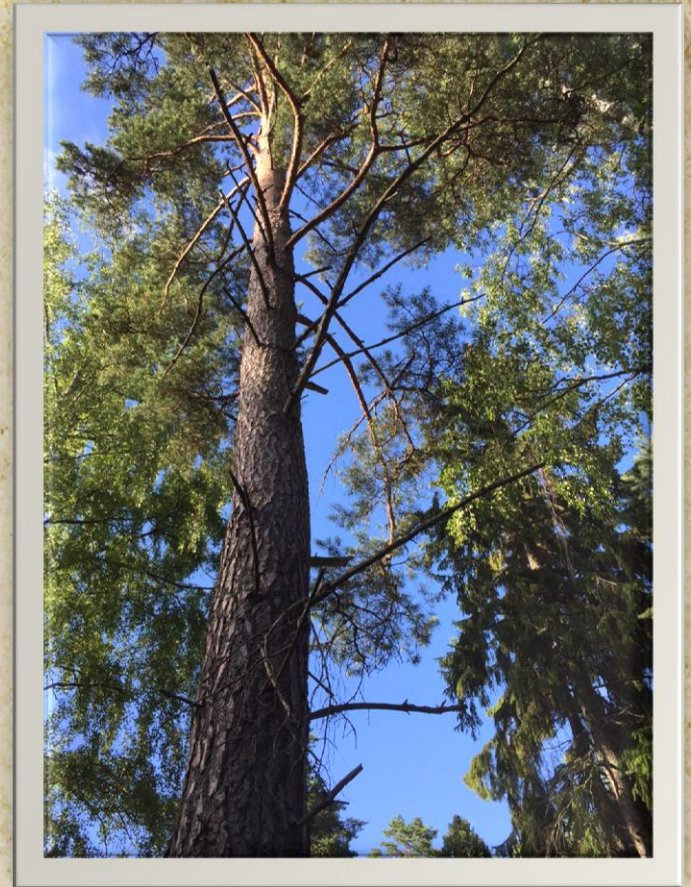
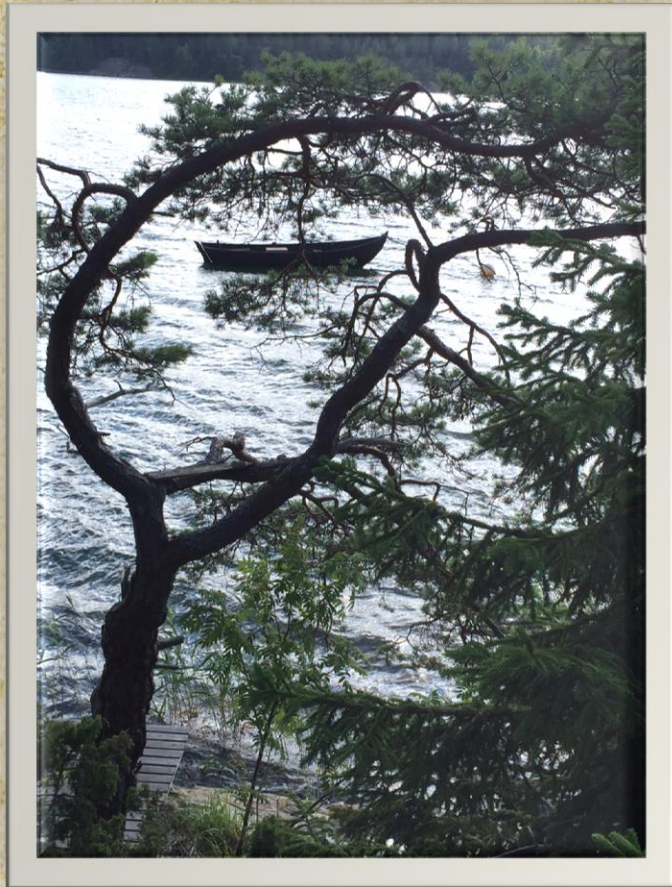
Who Are We in this Time of Unscripted
Ethics?

Nora Bateson
2018

“What pattern connects the crab to the lobster, and the orchid to the primrose and all four of them to me? And me to you?...The pattern which connects is a metapattern.

It is a pattern of patterns.”
(Mind and Nature)





“The evolution is in the context” –
G.Bateson

Who we were, are and who we will be—

Looking backward we can justify, authorize and claim the boundaries our identities. But looking forward we must ask :

Who do we want to be in this transforming world? Who are we now?

....And what of humanity?



Where is the edge of the “self” --?

- ⊗ *“Darwin proposed a theory of natural selection and evolution in which the unit of survival was either the family line or the species or subspecies or something of the sort. But today, it is quite obvious that this is not the unit of survival in the real biological world. The unit of survival is organism plus environment. We are learning by bitter experience that the organism which destroys in its environment destroys itself.” (G. Bateson page 491)*

“The opposite of complexity is *not* simplicity

...It is reductionsim.”



Transcontextual look at the Self

How is my identity is learning and forming through contexts of:
Culture, religion,, education, finance, status, physical strength, gender,
history, profession?



Complexity Overlapping

Conceptual, Ecological & cultural



Gilbert, Sapp and Tauber: We Have Never Been Individuals.

- ⊗ Animals cannot be considered individuals by anatomical or physiological criteria because a diversity of symbionts are both present and functional in completing metabolic pathways and serving other physiological functions. Similarly, these new studies have shown that animal development is incomplete without symbionts. Symbionts also constitute a second mode of genetic inheritance, providing selectable genetic variation for natural selection.
- ⊗ Quarterly Review of Biology 2012 [Volume 87, Number 4 | December 2012](#)

Ecology is a family matter



- ⊗ The **Gulf Stream** system –which keeps Scandinavia in a regulated weather pattern and warm enough to inhabit is slowing down 450x faster than scientists anticipated.
- ⊗ 200 species go extinct & 1 million tons of Co2 are pumped into the air– EVERY DAY.
- ⊗ 75% of flying insects biomass is already lost.
- ⊗ Possible temperature increase of 5 degrees by 2050, but at 2 degrees we lose 60% of the Amazon which produces 20% of the world's oxygen. Already forests are burning.
- ⊗ Methane is starting to release in large quantities. Methane is more than 20 times as potent as CO2 as a heat-trapping gas.
- ⊗ The average person eats 70,000 microplastics each year. Plastic is killing more than 1.1 million seabirds and animals every year.

This is not about recycling.

It starts at home, between the generations.

This is about a way of perceiving the world and interacting with it.

Including paying attention to exploitation of people and the biosphere.

Change changes as it changes

Systems are responsively calibrating to each other.

Weather, culture, economy, identity



The elders are useless.

No one knows what to do.

Ambiguity (ovisshet) & Integrity



More information does not
mean less mistakes.



...But familiarity with the complexity of the situation may.

The Paradox of Agency

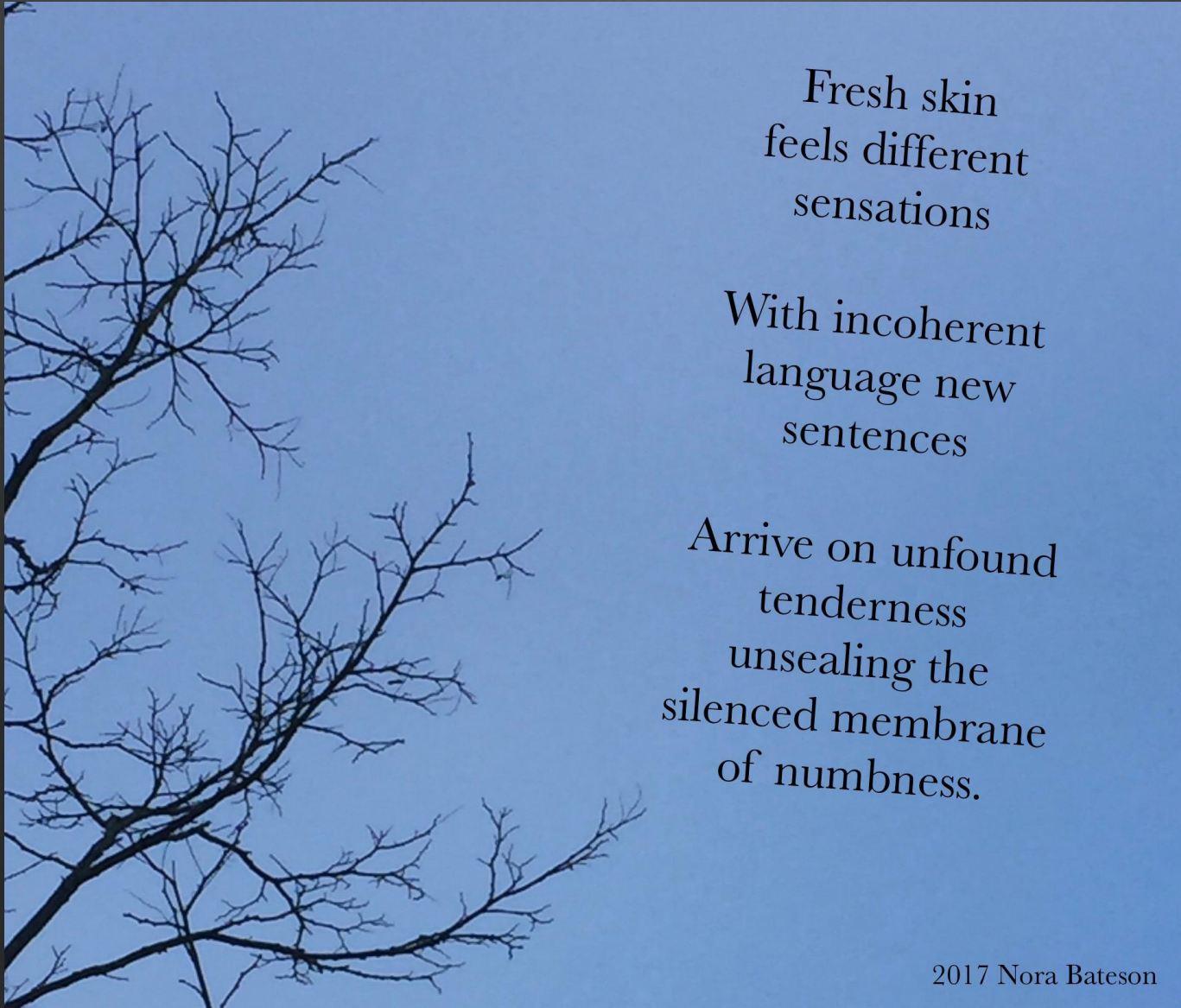
- ⊙ I am a unique entity framing the world through the only version of my filtering and sense making processes... I am me.
- ⊙ There is no place in me, no aspect of me that is uninfluenced, unconnected, or untouched by my contexts (language, culture, experience, education, genetics and so on).
- ⊙ I am me & I am not me.

“It is as if the stuff of which we are made were totally transparent and therefore imperceptible; and it is as if the only appearances of which we can be totally aware are the cracks and planes of fracture in that transparent matrix.” -Gregory Bateson

We don't lose one part of us when we accept the other parts. We can be both local and global, individual and communal. Our tribal habits no longer serve us. Zoom in, zoom out. You can do both.



Attention, Humility & Sensitivity



Fresh skin
feels different
sensations

With incoherent
language new
sentences

Arrive on unfound
tenderness
unsealing the
silenced membrane
of numbness.

Thank you

Transcontextuality



Transcontextual

“Let me coin the word “transcontextual” as a general term for this genus of syndromes.

It seems that both those whose life is enriched by transcontextual gifts and those who are impoverished by transcontextual confusions are alike in one respect: for them there is always or often a “double take.” A falling leaf, the greeting of a friend, or a “primrose by the river’s brim” is not “just that and nothing more.” Exogenous experience may be framed in the contexts of dream, and internal thought may be projected into the contexts of the external world. And so on. For all this, we seek a partial explanation in learning and experience.”

Sym = Together
Mathesi = Learning

Symmathesy
Learning-together



Symmathesy

Noun: An entity formed by contextual mutual learning through interaction.

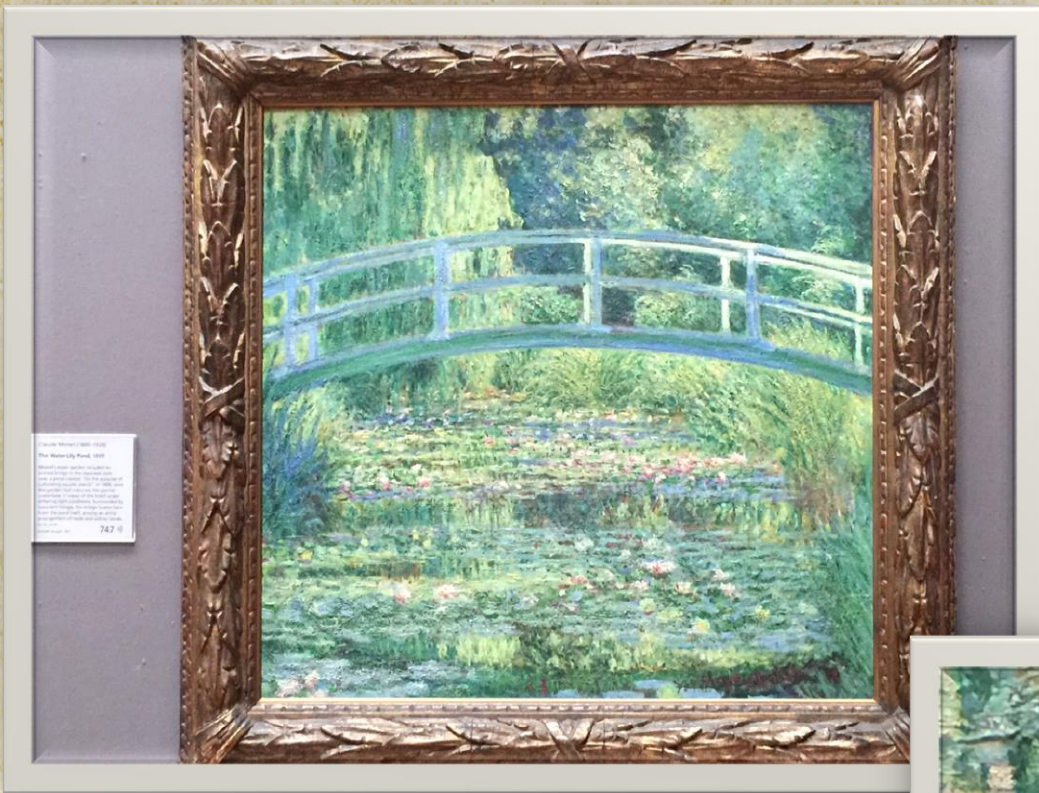
Symmthesize

Verb: To generate mutual learning contexts through the process of interaction between multiple variables in a living entity.

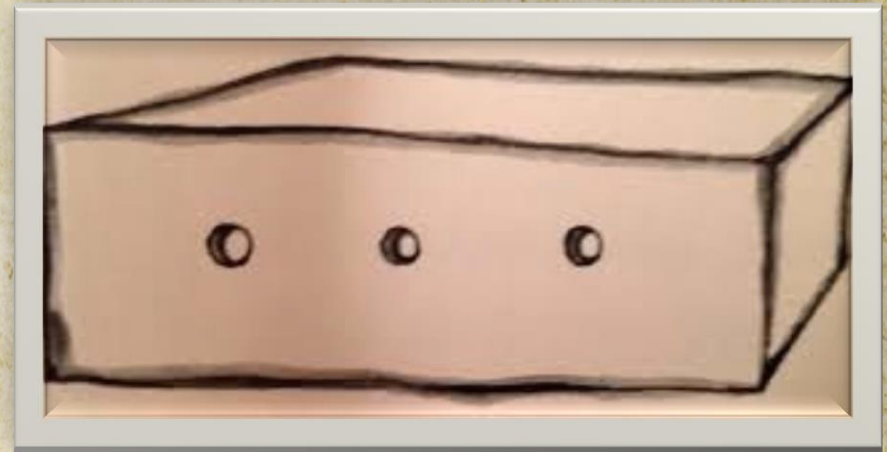
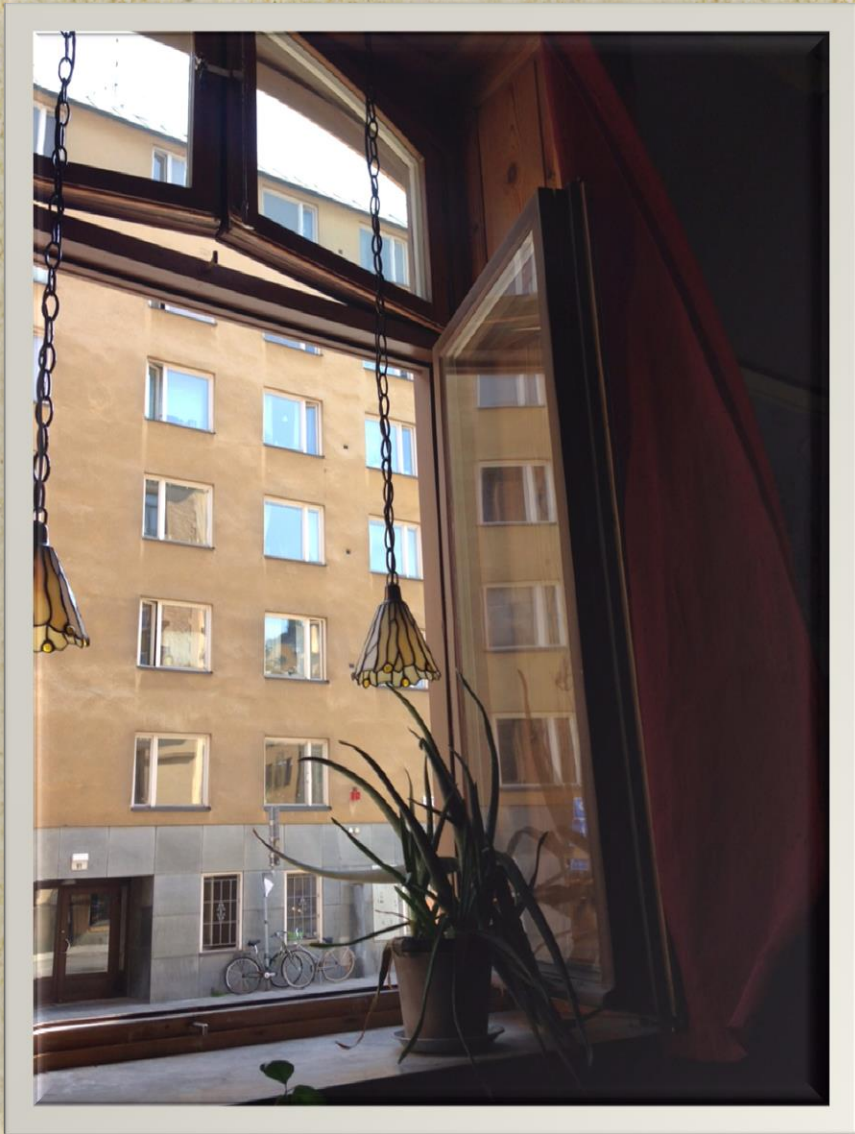


Criteria of Symmathesy

- ⊗ 1. context
- ⊗ 2. Bias
- ⊗ 3. Stochastic process
- ⊗ Boundaries
- ⊗ Time
- ⊗ Play



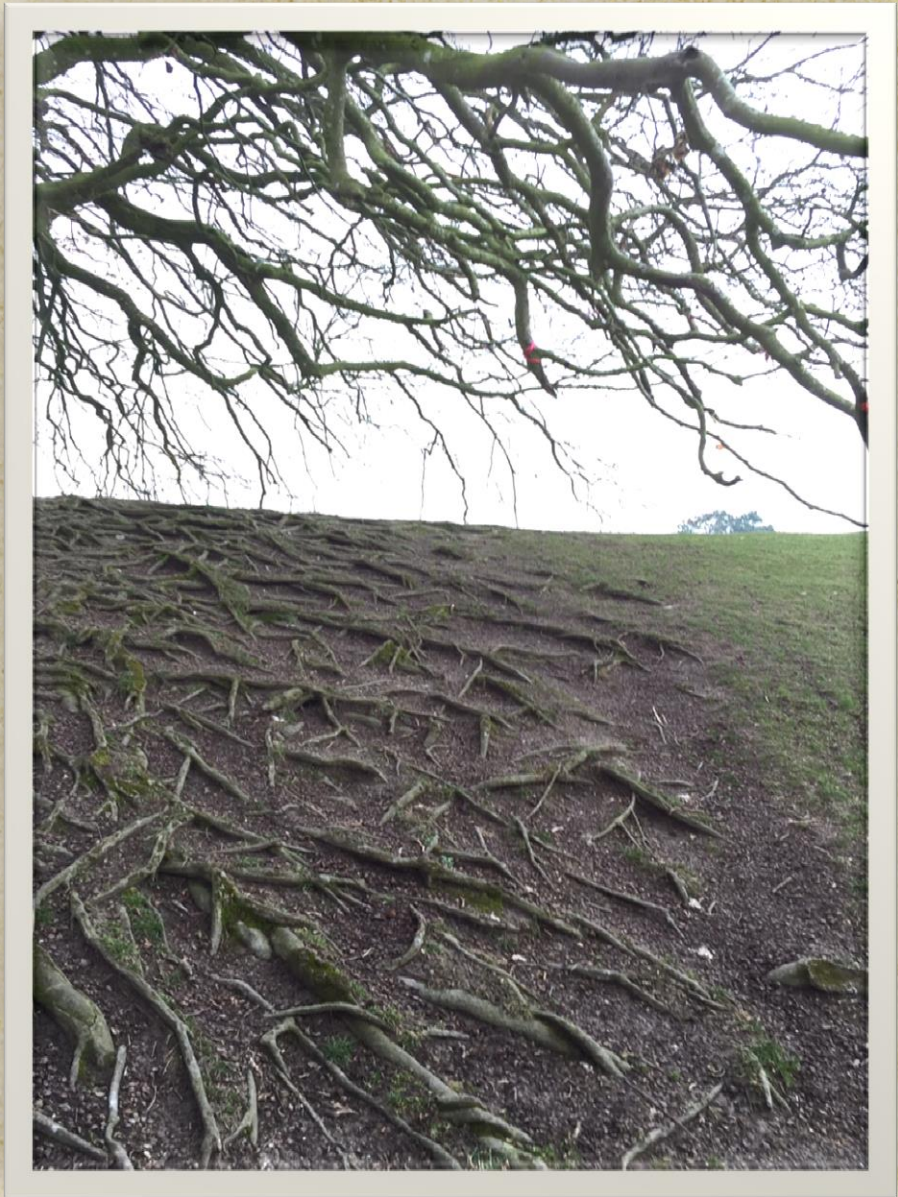
Context



Bias



Stochastic process



Boundaries



Time



Play

Practice, repetition and experimentation in communication and behavior around the edges of a bias are the frontiers of learning, evolution and change.

New form of know new (in) form (ation)

“At present there is no existing science whose special interest is the combining of pieces of information. But I shall argue that the evolutionary process must depend upon such double increments of information.

Every evolutionary step is an addition of information to an already existing system. Because this is so, the combinations, harmonies, and discords between successive pieces and layers of information will present many problems of survival and determine many directions of change.” –

G.Bateson Mind & Nature

Warm Data

And intro to the warm data lab

“Warm Data” can be defined as:

Transcontextual information about the interrelationships that integrate a complex system.

⦿ Patterns that connect, Bertrand Russell's Logical Levels, Difference that makes a difference, Multiple description, Mutual learning and calibration (Symmathesy), Iterative multi-modal learning, Autopoeisis (Varela and Maturana) Mind (G. Bateson), Systems and Complexity Theory, Ecology of communication, Double Bind, Conscious Purpose, Epistemological frames, Abduction, Requisite Variety, Change in complex systems, Interdependency, Transcontextual processes, Improvisation/sense-making

Fixing things with mechanistic ideas



So many solutions needed...

Or?



Criteria Warm Data

- ⊗ 1. Observing the observer
- ⊗ 2. Multiple description
- ⊗ 3. Pattern
- ⊗ 4. Paradox, inconsistency and time
- ⊗ 5. Holism and Reductionism
- ⊗ 6. Cultural responsibility
- ⊗ 7. Aesthetic, mood, rhythm.

Double Binds

learning and stuckness

- ⊗ Multiple contexts form binds across multiple contexts:
- ⊗ Description of Double Bind
- ⊗ Adding more contexts for symmathesy allows the learning reorganize.

Usefulness

- I have applied this principal to:
 - city health care systems
 - the re-definition of addiction
 - the re-thinking of education & curriculum
 - long-term recovery of illness, injury & heartbreak
 - evolutionary biology
 - toward a better understanding of economic systems
 - and to our changing climate.

What Warm Data Effects

Everything. Business, medical, economics, development, ecological understanding, cross cultural diplomacy, and more.